



BROWN FAUX LEATHER FABRIC AND UPHOLSTERY COLLECTION

AVAILABLE FOR FURNITURE AND TOP OF THE BED BEDDING

LEATHER 101

Note: Leather is the finest upholstery material you can find. It is a perfect fit for any room of your home or office or lodge. The strongest upholstery material known to man will withstand the rigors of daily life, including children, spills, and pets. Although the principal outlay of quality leather may be more than fabric upholstery, leather is actually your best deal over time.

Faux leather is a substance that looks very similar to leather, with very different properties. Sometimes, this is known as pleather. Faux leather is typically made out of vinyl and fibers to make it look more realistic. Start the hottest trends create satchels and clutches and with the best for the less.

This Upholstery Weight, Flannel Backed Faux Leathers Have a soft hand and is Perfect for Upholstering

Important Definitions

When making a leather furniture choice, various materials may meet your requirements. This information is intended to help you determine what product you are being offered and to assist you in deciding what you want in your home based on your budget, needs and an informed understanding of various product types.

The following terms are often used to describe the differences in furniture leather and other upholstery products:

Top-grain leather

This leather comes from the outermost upper layer of the cowhide, and is the only leather recommended for all high quality sofa leather. The best top-grain hides reflect that the animal has lived in an environment that resulted in limited scratches, insect bites or other damage. These hides can be minimally processed and used in their most natural form. Generally, less processing allows the hide to be softer and display a more natural character.

Corrected Leather:

Corrected leather has been significantly processed so that lower quality top-grain hides may be used. Corrected means the application of more chemicals and paint, the stamping of an artificial texture and other processes. This tends to produce leather that is not as soft as less-processed top-grain but has a more uniform look and finish, making the product very durable. Corrected leather allows for a lower price for the final product. It is often best suited for recreational rooms or other places that require exceptional durability.

Protected Leather:

This is simply another way of saying “corrected” leather, except it may not be limited to top-grain. It refers to the fact that enough paint or other finish was applied to make the surface more durable than a more natural and less-processed leather.

Split Leather:

The process of tanning leather involves reducing the hide to the thickness required for upholstered products. The back of an animal has a thicker skin, so it is “split” to create a piece of leather out of this extra thickness. This is real leather but has no natural surface and lacks the strength of top-grain leather. Split leather is processed by correcting the leather, giving it a stamped and painted surface that approximates a top grain, and then used for the backs and sides of sofas to reduce the cost of the final product. This use is legitimate and appropriate but the consumer should be informed when split leather is used.

Leather-Match:

This term is used to describe an upholstered product where a portion of the product is real leather but the back, sides or less visible parts are constructed of an artificial material, usually vinyl. It is matched to look like leather. Leather-match is often used on motion furniture or recliners but can be used on any upholstered product. It is a method of creating a product that offers the sight and touch of real sofa leather but significantly reduces the final price.



BROWN FAUX LEATHER FABRIC AND UPHOLSTERY COLLECTION

AVAILABLE FOR FURNITURE AND TOP OF THE BED BEDDING

Bi-cast Leather:

This product comes in roll form like a fabric rather than the shape of an animal hide. It is really a plastic product that contains leather but in a manner where the customer neither can see nor feel the leather. The product uses the lower-value and lower-cost split leather as the backing of the product and creates a finish by applying a sheet of plastic on the front surface, usually polyurethane (PU), to provide the color, texture and strength. This product tends to be fairly stiff and is usually produced in dark colors only.

ReCast

It's difficult to tell the difference between real leather upholstery and ReCast® faux leather upholstery. Made with recycled leather particles adhered to the back of the fabric, ReCast contains about 18% recycled leather. ReCast faux leather upholstery's polyurethane surface gives it exceptional performance qualities and a true leather-like feel. Each pattern has tremendous physical properties, is easy to clean, and will easily exceed 100,000 Wyzenbeek abrasion cycles.

Fabric faux leather upholstery can be used on any application where traditional leather would be used, such as sofas, love seats, sectionals, recliners, club chairs, occasional chairs, headboards, and even some light commercial applications for offices, hotel room chairs and lobby seating.

Fabric comes in a wide variety of colors ranging from rich earth tones (think deep browns, maroons and tans,) to metallic's, as well as bold, bright colors, pastels and white. So go ahead, revel in the exceptional design possibilities of ReCast® leather upholstery fabric. Re-cast or by-cast leather is sold by the running yard.

The face is 100% polyurethane, which is what Ultra leather is made of. The backing is 18 to 20% real leather which has been ground up and processed into a backing material. You really need to see what you're getting before you buy it. Recast leather, also called Bycast, Bicast or PU leather, there are hundreds of different colors and grains available. It is fabric with a 100% polyurethane face (like Ultra leather) with a backing of recycled actual leather.

Historically, when faced with the choices for a synthetic substitute for leather, the design community has turned to polyurethane and pvc products. These leather alternatives have the advantage of being more affordable, but no one enjoys the feeling of their thighs peeling off of a vinyl couch cushion in the middle of summer.

Recycled leather called "Recast." Not only is this product beautiful and affordable, it is also eco-friendly and sustainable. Recast is made by incorporating ground post-industrial leather onto the back of a 100% polyurethane base. Does that make Recast a type of "steer-veneer?"

This process creates a product so leather-like, it is difficult to tell the difference between genuine leather and Recast. Currently, it is available in 25 combinations of natural grains and designer colors. And with an abrasion rating of 100,000 double rubs, Recast is an ideal choice for any rough and tumble lifestyle project or the contract and hospitality market. Isn't modern technology a beautiful thing?!

Bonded Leather

The term serves no purpose other than to permit the use of the word "leather" to be associated with the product. This is really a PU (polyurethane) product that has leather shavings sprayed onto the back. The top layer showing the outer color and texture is PU. The strength and carrier of the product is a thin fabric in the center. The leather shavings are applied on the back as described.

**BROWN FAUX LEATHER FABRIC AND UPHOLSTERY COLLECTION**

AVAILABLE FOR FURNITURE AND TOP OF THE BED BEDDING

Bonded Leather Match

This is a construction where some bonded leather is used on a product and the balance is normally the same product without leather shavings. The purpose of the match is to reduce cost, while the purpose of the bonded leather is to allow the term “leather” to be associated with what is essentially a plastic or PU product. The product may be attractive and appropriate for certain consumer applications but it is not leather.

Polyurethane (PU)

This is a very effective form of plastic that can be applied to fabric or other products to create beautiful and durable surfaces. The product is considered safe if appropriate materials and dyes are used, and is recommended for applications that are price-sensitive and require a high degree of durability. PU is very versatile. It can be made to replicate leather, suede and any number of other surfaces.

Vinyl

A product similar to PU but normally not as durable or versatile. It is normally lower in cost than PU so is used for “match” applications where strength is not an issue. It can be made to replicate leather, suede and any number of other surfaces.

PVC

Polyvinyl Chloride is also manufactured in a similar manner but is normally placed on a cotton or polyester backing. Pattern can also be applied to the surface. PVC can be a more durable surface than PU, but does not feel like leather. Also referred to as Vinyl covering for Furniture use. It can be made to replicate leather, suede and any number of other surfaces.

Nubuck

This is a term that has historically been associated with suede leather but is not a legal term. It is sometimes used for artificially produced forms of suede. If the price is exceptionally low, it is likely not real leather.

Proprietary Terms

Manufacturers of non-leather products and producers of finished upholstered product frequently develop their own proprietary terms to describe their product (i.e. using invented names, such as combining “new” and “hide” with creative spelling.) As you can imagine, a frequent characteristic of these names is the tendency to use terms that imply strength and durability, or are associated with leather. Typically none of these names apply to real leather. The product they describe is usually a bonded leather or a polyurethane product. The product itself may be appropriate but the consumer should seek clarity as to what the product really is constructed of.



Cranium Furniture

ITASCA MEADOWS 1038 LINCOLN ELK GROVE VILLAGE, ILLINOIS P866.508.8899 F866.418.4159

BROWN FAUX LEATHER FABRIC AND UPHOLSTERY COLLECTION

AVAILABLE FOR FURNITURE AND TOP OF THE BED BEDDING

LIGHT WEIGHT FAUX LEATHER

UNITED COLLECTION

Samples Available

Ideal soft Leather-like fabric for Upholstery and more!

Weight: 3 oz.

Available Colors:



BROWN FAUX LEATHER FABRIC AND UPHOLSTERY COLLECTION

AVAILABLE FOR FURNITURE AND TOP OF THE BED BEDDING

STITCH EMBOSSED FAUX LEATHER - RECAST

MITCHELL COLLECTION

Samples Available

Park Chester ReCast

We took the same embossing technology used on Frank and designed bold geometric blocks - and Park Chester was born. It's the perfect headboard upholstery when you want the look of embroidered stitches but need stronger durability. Park Chester can also be used for seating, pillows and more.

- Surface Type: 100% PVC 8/10/2011
- Weight at 54 inches: 33oz/yd 1023g/m
Revision: 0
- Backing weight: 3.5oz/yd2
- Backing Type/composition:
Polyester/Cotton
- California Technical Bulletin 117, Section E. Meets Requirements
- U.F.A.C. Class I Meets Requirements
- BIFMA Class A Meets Requirements
- NFPA 260 Meets Requirements
- IMO A.652(16)8.2 Meets Requirements
- May comply with California 133 when tested with suitable components.



Recommended color:



Collection: MG Park Chester | Color: Brown

BROWN FAUX LEATHER FABRIC AND UPHOLSTERY COLLECTION

AVAILABLE FOR FURNITURE AND TOP OF THE BED BEDDING

WORN BURNISHED FAUX LEATHER - RECAST

MITCHELL COLLECTION

Samples Available

Stallion ReCast

Stallion is a new and improved faux leather upholstery fabric with a softer hand and a balanced gloss that really shows off the print. Stallion has been brushed, sueded, printed and washed. It's a complicated product to make, but the end result of all the processes is a gorgeous worn, burnished leather look.

- Surface Type: 100% PU 12/13/2011
- Weight at 54 inches: 13.5oz/yd Revision: 0
- Backing weight: 100 % Polyester
- Backing Type/composition: 3.8oz/Sq. yd
- Finished Width 54"min
- California Technical Bulletin 117, Section E. Meets Requirements
- U.F.A.C. Class I Meets Requirements
- NFPA 260 Meets Requirements
- May comply with California 133 when tested with suitable components



Available colors:



Amber



Bittersweet



Black Oak



Bordeaux



Chaps

BROWN FAUX LEATHER FABRIC AND UPHOLSTERY COLLECTION

AVAILABLE FOR FURNITURE AND TOP OF THE BED BEDDING

METALLIC GATOR FAUX LEATHER

MITCHELL COLLECTION

Samples Available

Aztec

Aztec is an alligator faux leather fabric with a metallic sheen. Aztec is offered in a contemporary color range suitable for commercial seating and headboard applications. The contrast within the rich colors accentuates the texture and repeat of the pattern. Aztec alligator faux leather fabric has great physical properties and is designed with the hospitality marketplace in mind.

- Content: 100%PVC (Double Rub: 35000)
- Pattern Repeat: 12 1/2" V; 9 1/2" H (Weight: 28.5oz/yd) May comply with California 133 when tested with suitable components.
- 54 Wide

Available colors:



Copper



Mineral

BROWN FAUX LEATHER FABRIC AND UPHOLSTERY COLLECTION

AVAILABLE FOR FURNITURE AND TOP OF THE BED BEDDING

MINI CROCODILE FAUX LEATHER

MITCHELL COLLECTION

Samples Available

Bi-Crock

Looking for new headboard ideas? May we suggest a crocodile fabric headboard? Why? This small, scale reptile look is perfect for headboard or commercial seating applications that require smaller pattern repeats. The two-tone effect is subtle. Intricate graining gives the pattern depth, dimension and the appearance of a craggy old reptile. Bi-Crock will have a slight color pull-up effect wherever it is stitched, tufted, or stressed around corners. Best of all, it comes in an array of incredible new colors. So make that crocodile fabric headboard, or set of restaurant chairs a reality.

- Content: 100%PU (Double Rub: 100000)
- Pattern Repeat: 6" H; 10 1/4" V (Weight: 28.5oz/yd) May comply with California 133 when tested with suitable components.
- 54 Wide

Available colors:



Brownie



Shiraz



Walnut

BROWN FAUX LEATHER FABRIC AND UPHOLSTERY COLLECTION

AVAILABLE FOR FURNITURE AND TOP OF THE BED BEDDING

ALLIGATOR FAUX LEATHER

MITCHELL COLLECTION

Samples Available

Crock

Other than the animal itself, nothing looks more like a real crocodile than Crock. With its massive reptile texture and rich two-tone coloration, Crock faux crocodile leather demands a double take. Although not designed for seat cushions, Crock is perfectly suitable as a coordinate on seat and booth inside and outside backs and headboards. Crock faux crocodile leather looks great when accented with real leather or microfiber and even comes in several metallic colors to broaden its appeal and application. Even the Crocodile Hunter would approve. And that's no crock.

- Content: 100% PVC (Double Rub: 35000)
- Durability:
- Origin:
- Pattern Repeat: 10" V, 10 3/4" H (Weight: 33oz/yd) May comply with California 133 when tested with suitable components.
- 54 Wide

Available colors:



Amber



Bittersweet



Black Oak



Bordeaux



Chaps

BROWN FAUX LEATHER FABRIC AND UPHOLSTERY COLLECTION

AVAILABLE FOR FURNITURE AND TOP OF THE BED BEDDING

ALLIGATOR FAUX LEATHER VINYL

OFS COLLECTION

Samples Available

Nassimi Symphony Collection**Color: Hogan Allspice Brown**

- Material: 100% Vinyl
- Width: 54"
- Weight: 38 Ounces per Linear Yard
- Thickness: 1.3 mm
- Backing: Polyester/Cotton
- Suggested Uses: Hospitality, Contract, Automotive & RV, Residential

Performance Specifications:

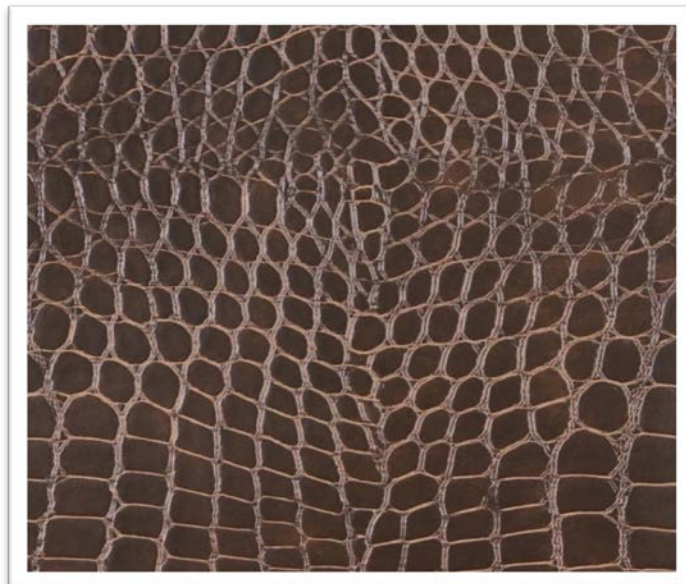
- Abrasion Resistance: 100,000+ Double Rubs per ASTM D 4157-92 Wyzenbeek / CFFA-1A
- Ultra Violet Resistance: 200 Hours ASTM G26-96 Method C / CFFA-2
- Cold Crack: -20 degrees F Federal Standard No. 191A-Method 5874 / CFFA-6

Flammability Requirements:

- California Fire Code Technical Bulletin No. 117, Section E; BIFMA; UFAC Class 1; MVSS 302; NFPA 260; IMO A.652 (16) 8.2; IMO A.652 (16) 8.3; ASTM E84: Class I or A Rating; May Comply with California 133 when Tested with Suitable Components

Cleaning Instructions:

- Prompt cleaning is always recommended. Ordinary dirt and stains can be removed with a mild soap and water. Rinse the cleaned area with clean water and dry with a lint-free cloth. Hogan will resist, without serious discoloration, the repeated actions of normal dilutions of non-abrasive chlorine or ammonia-based cleaners.



BROWN FAUX LEATHER FABRIC AND UPHOLSTERY COLLECTION

AVAILABLE FOR FURNITURE AND TOP OF THE BED BEDDING

CROCODILE FAUX LEATHER

MITCHELL COLLECTION

Samples Available

Everglade

Everglade commercial seating upholstery has the look and feel of a reptile, but is much more inviting than the real-life variety. Everglade has a wonderful texture and a very user-friendly scale that makes it perfect for smaller cushion, commercial seating applications or as an accent. The beautiful earth tone color creates a crisp, clean look.

- Content: 100% PVC (Double Rub: 25000)
- Pattern Repeat: 8" H; 4" V (Weight: 33oz/yd) May comply with California 133 when tested with suitable components.
- 54 Wide
- All products are 1st quality and guaranteed.

Recommended Color: Beechwood

BROWN FAUX LEATHER FABRIC AND UPHOLSTERY COLLECTION

AVAILABLE FOR FURNITURE AND TOP OF THE BED BEDDING

METALLIC MINI CROCODILE FAUX LEATHER

CAROLINA COLLECTION

Samples Available

Mirage

- Content: 100%PVC (Double Rub: 100000)
- Pattern Repeat: 12 1/2" V; 9 1/2" H (Weight: 28.5oz/yd) May comply with California 133 when tested with suitable components.
- 54 Wide
- All products are 1st quality and guaranteed.

Recommended colors:



Burgundy



Topaz

BROWN FAUX LEATHER FABRIC AND UPHOLSTERY COLLECTION

AVAILABLE FOR FURNITURE AND TOP OF THE BED BEDDING

THREE DIMENSIONAL TEXTURED FAUX LIKE WOVEN LEATHER

SYMPHONY COLLECTION

Samples Available

SAN REMO

- **Material:** 100% Vinyl
- **Width:** 54"
- **Weight:** 36 Ounces per Linear Yard
- **Thickness:** 1.1 mm
- **Backing:** Woven Poly/Cotton
- **Suggested Uses:** Automotive/RV, Contract, Education, Hospitality, Residential
- **Features:** Stain Resistant, Meets Motor Vehicle Safety Standard 302

Performance Specifications:

- Abrasion Resistance: 100,000+ Double Rubs per ASTM D 4157-92 / CFFA-1A
- Ultra Violet Resistance: 200 Hours ASTM G26-96 Method C / CFFA-2
- Cold Crack: -10 degrees F Federal Standard No. 191A-Method 5874 / CFFA-6

Flammability Requirements:

- California Fire Code Technical Bulletin No. 117; UFAC Class I; BIFMA; UFAC Class1; NFPA 260; IMO A.652(16)8.2 & 8.3; ASTM E84: Class I or A Rating

Cleaning Instructions:

- Prompt cleaning is always recommended. Ordinary dirt and stains can be removed with mild soap and water. Rinse the cleaned area with clean water and dry with a lint-free cloth.

Available colors:



Truffle



Pomegranate



Madeira



Bourbon



Pine Cone

BROWN FAUX LEATHER FABRIC AND UPHOLSTERY COLLECTION

AVAILABLE FOR FURNITURE AND TOP OF THE BED BEDDING

OSTRICH SKIN FAUX LEATHER

CAROLINA COLLECTION

Samples Available

Del Rio 300

- Content: 100% PVC (Passes 100,000 Double Rubs, Heavy Duty).
- Pattern Repeat: H: 5/8" V: 5/8".
- 54 Wide
- All products are 1st quality and guaranteed.

Recommended colors:



Buckskin



Chocolate

BROWN FAUX LEATHER FABRIC AND UPHOLSTERY COLLECTION

AVAILABLE FOR FURNITURE AND TOP OF THE BED BEDDING

OSTRICH SKIN FAUX LEATHER "LOOKS OF REAL OSTRICH SKIN"

CAROLINA COLLECTION

Samples Available

EMU

This wildly popular pattern simulates the look of real ostrich skin. You thought it was real? We're not savages. Emu is faux ostrich leather, and while not designed for seat cushions, it is perfectly suitable for inside and outside seat booth backs and headboards. Emu faux ostrich leather is also the perfect accent with solid color leather and faux leather, or microfiber suede. With a vast selection of fun and fabulous eye-catching colors to choose from, you'll want to pull your head out of the sand for Emu faux ostrich leather.

- Content: 100%PVC (Double Rub: 35000)
- Pattern Repeat: 1/2" H; 1/2" V (Weight: 33oz/yd) May comply with California 133 when tested with suitable components.
- 54 Wide

Recommended colors:



Emu Bark



Emu Espresso



Emu Sable

BROWN FAUX LEATHER FABRIC AND UPHOLSTERY COLLECTION

AVAILABLE FOR FURNITURE AND TOP OF THE BED BEDDING

FLAT OSTRICH FAUX LEATHER “AUTHENTIC LOOK OF REAL EMU SKIN”

MITCHELL COLLECTION

Samples Available

Outback

Outback is a faux leather upholstery material that features a dimpled leather pattern and has the authentic look of real Emu skin. It has a soft leathery hand and great physical properties and can be used for any commercial seating application. The faux leather upholstery material is available in a large selection of light earth tones along with a full array of deeper colors to round out the line. Outback looks great as a stand-alone, or in a combination with solid color leather, faux leather, woven textures or microfiber suede.

- Content: 100% PU (Double Rub: 100000)
- Pattern Repeat: 0 (Weight: 22.5oz/yd) May comply with California 133 when tested with suitable components.
- 54 Wide

RECOMMENDED COLOR: BRIAR

BROWN FAUX LEATHER FABRIC AND UPHOLSTERY COLLECTION

AVAILABLE FOR FURNITURE AND TOP OF THE BED BEDDING

GLOSSY SNAKE SKIN FAUX LEATHER "UNIQUE REPTILE SKIN"

MITCHELL COLLECTION

Samples Available

Voilà

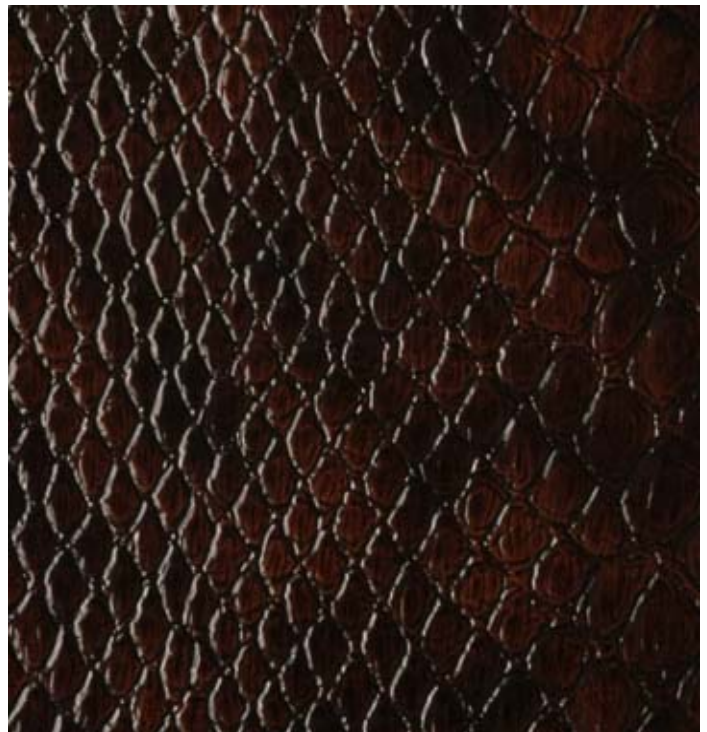
Looking for a unique reptile skin upholstery? Voilà! No, really. Here it is. Voilà is 100% PVC imitation leather in a high-gloss skin. Offered in truly, truly outrageous colors for an awesome show-stopping effect that's attractive and durable for a variety of hospitality seating applications. One look at this reptile skin upholstery and you say, "Voilà! Très Magnifique!"

- Content: 100% PVC (Double Rub: 35000)
- Pattern Repeat: 0 (Weight: 37.5oz/yd) May comply with California 133 when tested with suitable components.
- 54 Wide

Recommended colors:



Chocolate



Espresso

BROWN FAUX LEATHER FABRIC AND UPHOLSTERY COLLECTION

AVAILABLE FOR FURNITURE AND TOP OF THE BED BEDDING

TOOLED FAUX LEATHER FLORAL

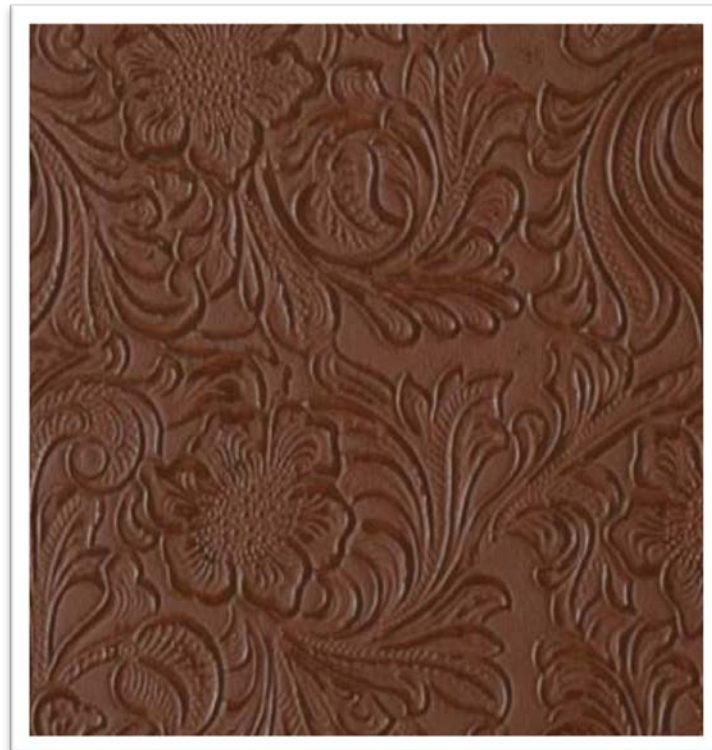
CAROLINA COLLECTION

Samples Available

Laredo- Olaredo

Beautiful hand-tooled leather look with an intricate scrolled floral design, Laredo is a nice option in floral upholstery fabric with a feel of the Old West. Available in rich earth tones including a beautiful turquoise shade. Laredo floral upholstery fabric is perfect as an accent or cover for inside and outside chair and booth backs. It also is at home on headboards and other trim and surface applications.

- Content: 100% PVC.
- Pattern Repeat: H: 8" V: 8 1/4".
- 54 Wide

Recommended color:**Mink**



Cranium Furniture

ITASCA MEADOWS 1038 LINCOLN ELK GROVE VILLAGE, ILLINOIS P866.508.8899 F866.418.4159

BROWN FAUX LEATHER FABRIC AND UPHOLSTERY COLLECTION

AVAILABLE FOR FURNITURE AND TOP OF THE BED BEDDING

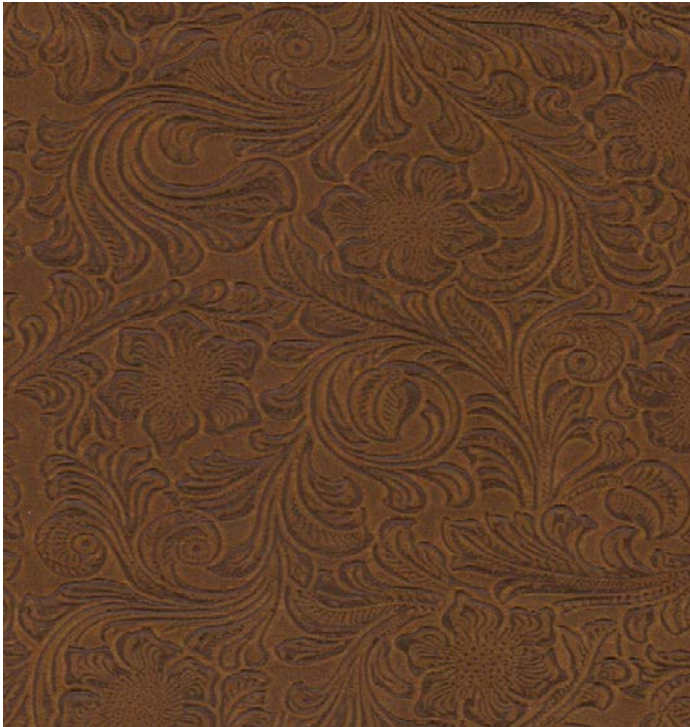
TOOLED FAUX LEATHER FLORAL

MITCHELL COLLECTION

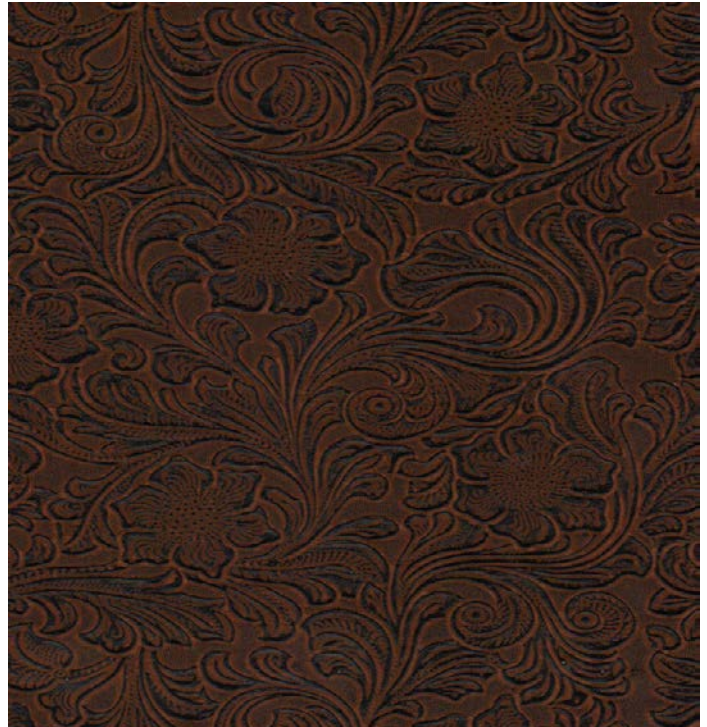
Samples Available

- Content: 100% PVC.
- Pattern Repeat: H: 8" V: 8 1/4".
- 54 Wide

Recommended colors:



Nugget



Copper

BROWN FAUX LEATHER FABRIC AND UPHOLSTERY COLLECTION

AVAILABLE FOR FURNITURE AND TOP OF THE BED BEDDING

TOOLED FAUX LEATHER FLORAL

MITCHELL COLLECTION

Samples Available

Abbey

A look you have seen on printed materials, mainly in fashion apparel, Abbey is the first faux leather, paisley upholstery fabric. It has the look of intricate, hand-tooled leather, with subtle toning that accentuates its decorative texture. Abbey is a 100% PVC paisley upholstery fabric with a strong polyester/cotton backing. Available in traditional colors, Abbey is suitable for any seating application, or as an accent combined with woven fabrics, microfibers or leather. This paisley upholstery fabric also looks great on headboards, ottomans and rolled arms.

- Surface Type: 100% PVC
- Weight at 54 inches: 33oz/yd Revision: 1
- Backing weight: 3.5oz/yd²
- Backing Type/composition: P/C: 65%:35%
- Finished Width 54"
- California Technical Bulletin 117, Section E. Meets Requirements
- U.F.A.C. Class I Meets Requirements
- NFPA 260 Meets Requirements
- May comply with California 133 when tested with suitable components

Recommended color:
Mahogany Paisley





BROWN FAUX LEATHER FABRIC AND UPHOLSTERY COLLECTION

AVAILABLE FOR FURNITURE AND TOP OF THE BED BEDDING

TOOLED FAUX LEATHER FLORAL

CAROLINA COLLECTION

Samples Available

Monterery

The western look of **Laredo** has been expanded by giving it an even more detailed pattern, and making it available in a variety of deep, rich colors that are sure to impress. It is the perfect chair upholstery fabric (works great for headboards too). Monterey comes in a wide variety of colors, so there's sure to be one to compliment any décor. Try pairing it with the Sta-Kleen brand, Prospect Park for a unique, sophisticated look that's sure to be noticed.

- Content: 100%PVC (Double Rub: 35000)
- Pattern Repeat: 0 (Weight: 33oz/yd) May comply with California 133 when tested with suitable components.
- 54 Wide

Available colors:



Espresso



Cranberry



Mink



Caramel



Chocolate

BROWN FAUX LEATHER FABRIC AND UPHOLSTERY COLLECTION

AVAILABLE FOR FURNITURE AND TOP OF THE BED BEDDING

TIE DYE TRI COLOR FAUX LEATHER

CAROLINA COLLECTION

Samples Available

Venice/Venus ReCast

We loved the look of Venetian glass so much we decided to recreate the look with our Venice fabric. Enjoy the feel and look of fine Italian leather furniture fabric faithfully recreated with in 100% heavyweight polyurethane. Perfect for chairs, trim and all around contract applications, Venice has a tri-color design with rich, subtle undertones. The overall look is similar to a tie-dye on rich Italian leather. Offered in several fascinating colors, Venice combines old-world beauty with modern-day materials to produce this striking, yet durable Italian leather furniture fabric.

- Content: 100% PU (Double Rub: 100000):
- Pattern Repeat: 0 (Weight: 30oz/yd) May comply with California 133 when tested with suitable components.
- 54 Wide

Recommended colors:



Marco



Castello

BROWN FAUX LEATHER FABRIC AND UPHOLSTERY COLLECTION

AVAILABLE FOR FURNITURE AND TOP OF THE BED BEDDING

SOUTHWEST RUGGED CRACKED GRAIN FAUX LEATHER

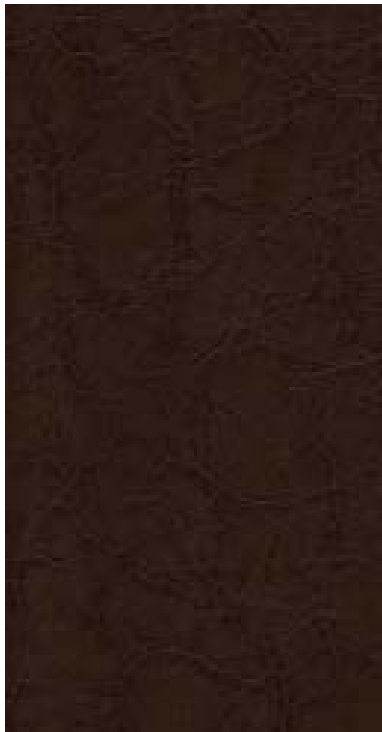
CAROLINA COLLECTION

Samples Available

Arizona

The look of rugged cracked leather that is enhanced by a color pull up effect wherever it is stressed: around corners, stitched areas, folded or tufted areas, etc. The ultimate leatherette fabric, the name fits the pattern perfectly as it has a look, feel and color that says southwest. Suitable for high-traffic commercial applications, Arizona is designed to take on more of an aged, distressed look the longer it is in use. If the Marlboro Man had a couch, this aged leatherette fabric is what it'd be made from.

- Content: 100% PU (Double Rub: 100000)
- Pattern Repeat: 0 (Weight: 18.8oz/yd) May comply with California 133 when tested with suitable components.
- 54 Wide

Recommended colors:**Chestnut****Cocoa****Sienna**

BROWN FAUX LEATHER FABRIC AND UPHOLSTERY COLLECTION

AVAILABLE FOR FURNITURE AND TOP OF THE BED BEDDING

DISTRESSED WORN LOOK FAUX LEATHER

CAROLINA COLLECTION

Samples Available

Chaps

Chaps is a upholstery fabric designed for residential uses such as sofas and dining room chairs that has a distressed leather look. Chaps has a soft, worn, leather hand, and dry tactile feel. A subtle savage print highlights the rugged distressed leather look of the pattern. If you didn't know better, you'd swear it was leather, but it's 100% polyurethane. Available in rich earth tones, Chaps is a perfect upholstery fabric choice for casual furniture groups.

- Content: 100% PU (Double Rub: 100000):
- Pattern Repeat: 0 (Weight: 9.1oz/yd) May comply with California 133 when tested with suitable components.
- 54 Wide

Available colors:



Brindle

Burgundy

Chestnut

Hide

Walnut

Saddle

BROWN FAUX LEATHER FABRIC AND UPHOLSTERY COLLECTION

AVAILABLE FOR FURNITURE AND TOP OF THE BED BEDDING

RUGGED SPOTTED FINE GRAIN FAUX LEATHER

CAROLINA COLLECTION

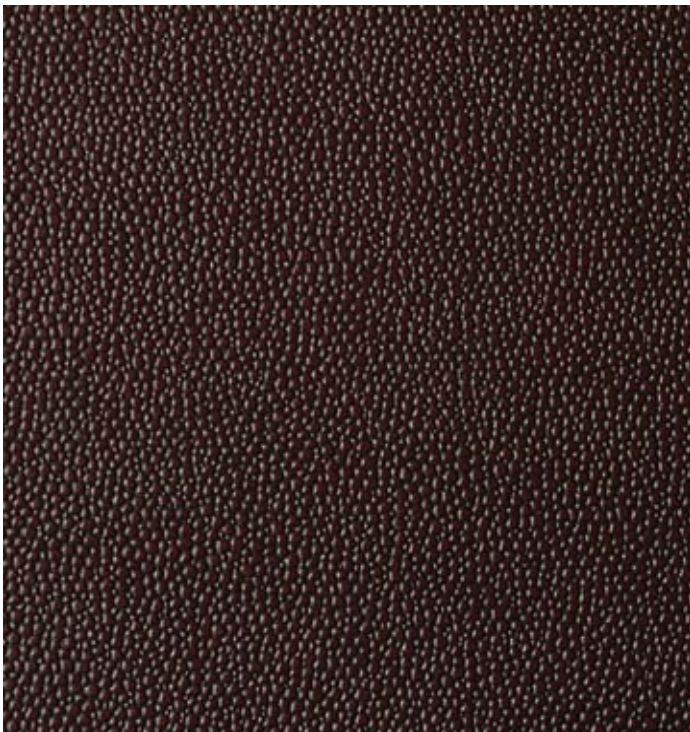
Samples Available

Cascade

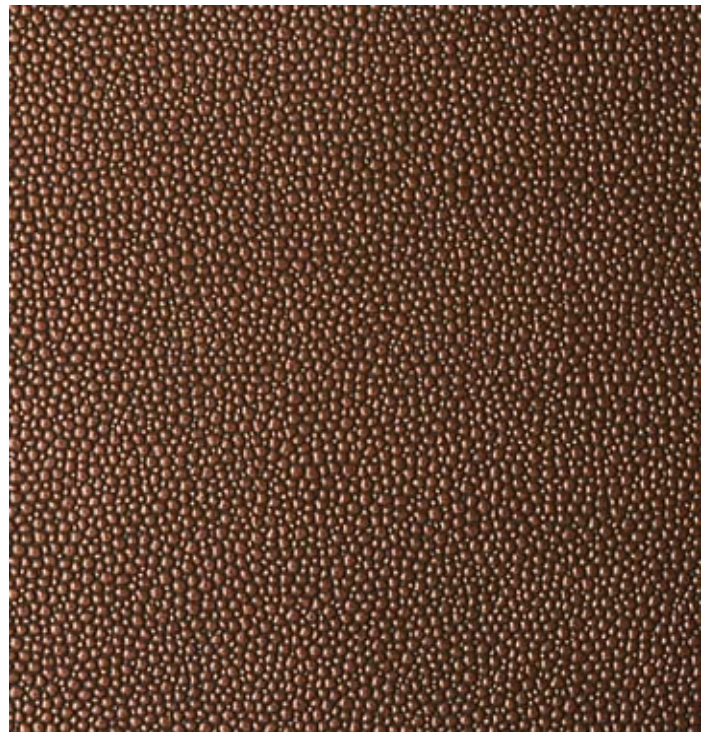
A rugged synthetic leather fabric that comes in a variety of great colors. The high-low effect has lots of depth due to a light pearl finish that cascades when the light hits it. The slightly raised grain gives Cascade a unique look for all over, trim and accent applications. It's more than you'd expect from a typical synthetic leather fabric.

- Content: 100% PVC (Double Rub: 35000)
- Pattern Repeat: 0 (Weight: 33oz/yd) May comply with California 133 when tested with suitable components.
- 54 Wide

Recommended colors:



Brown/Port



Copper



BROWN FAUX LEATHER FABRIC AND UPHOLSTERY COLLECTION

AVAILABLE FOR FURNITURE AND TOP OF THE BED BEDDING

GLOVE SOFT FAUX LEATHER

CAROLINA COLLECTION

Samples Available

Lexus/Lexi

Lexi's supple hand and smooth buttery texture is perfect wherever comfort is the goal. It's a soft leather-like material, and can be used for any commercial seating application - but it shows off best when used on soft cushions, bar or gaming rails, pillows and pillow-back seating. The extensive color line includes natural earth tones, burnt reds and earthy greens. Lexi has a stretch knit backing for easy sewing. It's physical properties include superior abrasion (easily surpassing 100,000 Wyzenbeek abrasion), tremendous Tensile and Tear Strength, and FR specs including MVSS-302 for use in RVs and other transportation applications. Plus, it's heavy metal and phthalate free.

- Content: 100% PU (Double Rub: 100000)
- Pattern Repeat: 0 (Weight: 16.5oz/yd) May comply with California 133 when tested with suitable components.
- 54 Wide

Recommended colors:



Chestnut



Fiena



Sienna



Chocolate



ITASCA MEADOWS 1038 LINCOLN ELK GROVE VILLAGE, ILLINOIS P866.508.8899 F866.418.4159

BROWN FAUX LEATHER FABRIC AND UPHOLSTERY COLLECTION

AVAILABLE FOR FURNITURE AND TOP OF THE BED BEDDING

GLOVE SOFT FAUX LEATHER

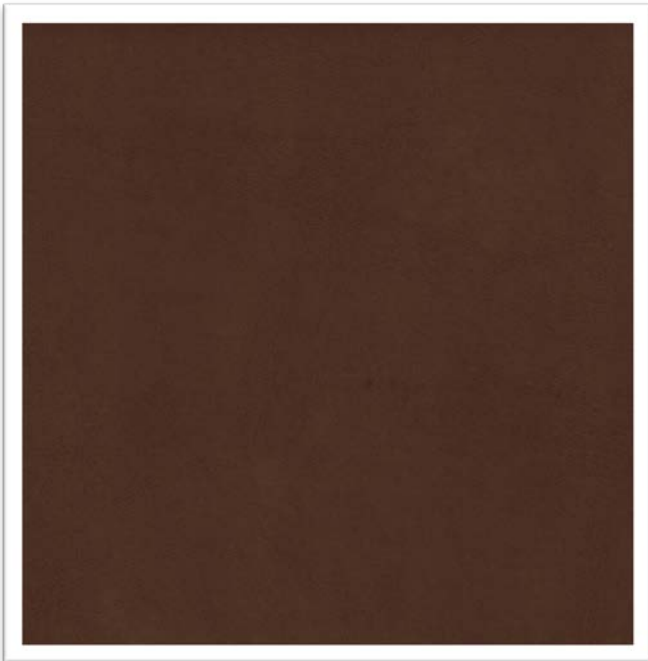
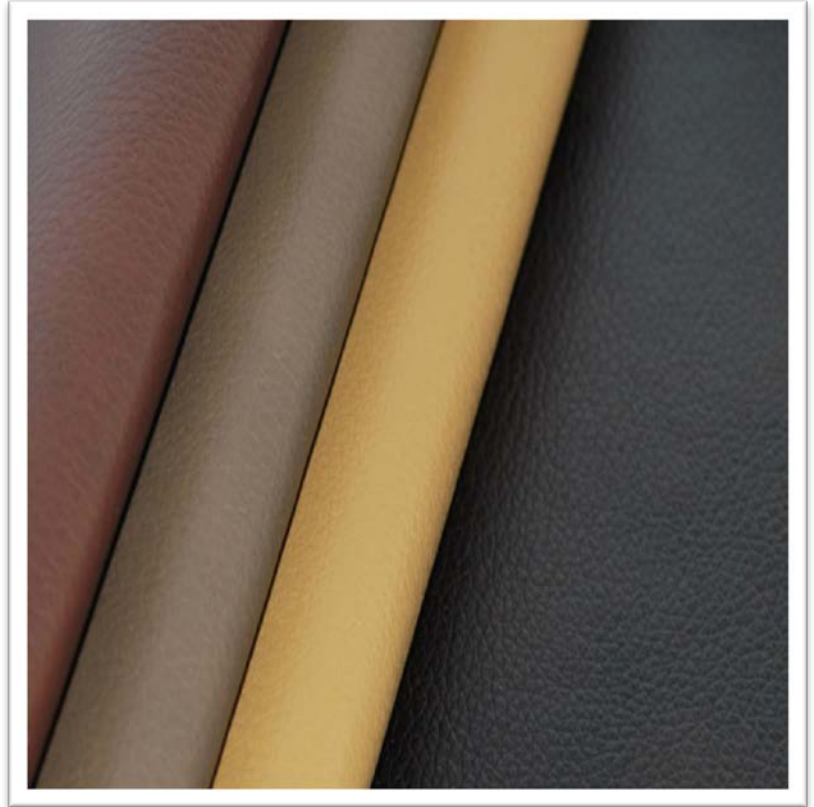
CAROLINA COLLECTION

Samples Available

Venus ReCast

What's not to love about Venus Recast® faux leather upholstery. It's more durable, cleanable and versatile than traditional leather. Available in an array of traditional leather colors with a smooth grain and true leather feel, Venus is an ideal sofa upholstery that blends style and performance perfectly.

Recommended Color: Bourbon



BROWN FAUX LEATHER FABRIC AND UPHOLSTERY COLLECTION

AVAILABLE FOR FURNITURE AND TOP OF THE BED BEDDING

FINE GRAIN REAL LEATHER BACK FAUX LEATHER

CAROLINA COLLECTION

Samples Available

What's not to love about Venus Recast® faux leather upholstery. It's more durable, cleanable and versatile than traditional leather. Available in an array of traditional leather colors with a smooth grain and true leather feel, Venus is an ideal sofa upholstery that blends style and performance perfectly.

- Content: SEMI-PU (Double Rub: 35000)
- Pattern Repeat: 0 (Weight: 33oz/yd) May comply with California 133 when tested with suitable components.
- 54 Wide

Recommended Color: Cordovan

BROWN FAUX LEATHER FABRIC AND UPHOLSTERY COLLECTION

AVAILABLE FOR FURNITURE AND TOP OF THE BED BEDDING

FINE GRAIN REAL LEATHER BACK FAUX LEATHER

CAROLINA COLLECTION

Samples Available

What's not to love about Venus Recast® faux leather upholstery. It's more durable, cleanable and versatile than traditional leather. Available in an array of traditional leather colors with a smooth grain and true leather feel, Venus is an ideal sofa upholstery that blends style and performance perfectly.

- Content: SEMI-PU (Double Rub: 35000)
- Pattern Repeat: 0 (Weight: 33oz/yd) May comply with California 133 when tested with suitable components.
- 54 Wide

Recommended Color: Cafe

BROWN FAUX LEATHER FABRIC AND UPHOLSTERY COLLECTION

AVAILABLE FOR FURNITURE AND TOP OF THE BED BEDDING

FINE GRAIN REAL LEATHER BACK FAUX LEATHER

CAROLINA COLLECTION

Samples Available

Mesa ReCast

One of our most successful Recast patterns, Mesa is good-looking, versatile and durable. With its smooth grain and soft leather hand, Mesa comes in a wide variety of colors to choose from ranging from traditional beige to bold Marine not to mention true White, so give Mesa a chance. We're pretty sure you'll never look at faux leather fabric the same way again.

- Content: SEMI-PU (Double Rub: 35000)
- Pattern Repeat: 0 (Weight: 33oz/yd) May comply with California 133 when tested with suitable components.
- 54 Wide

Recommended Color: Merlot

BROWN FAUX LEATHER FABRIC AND UPHOLSTERY COLLECTION

AVAILABLE FOR FURNITURE AND TOP OF THE BED BEDDING

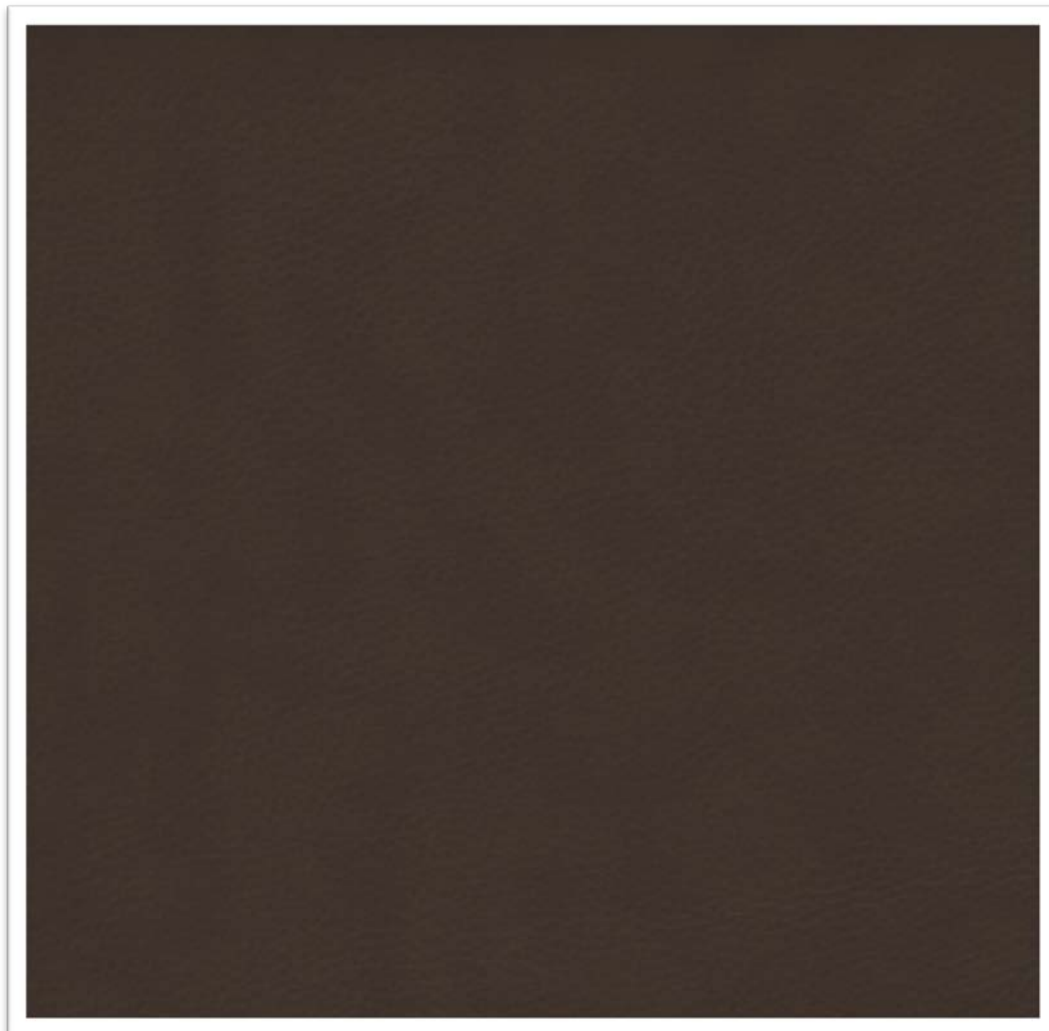
FINE GRAIN REAL LEATHER BACK FAUX LEATHER

CAROLINA COLLECTION

Samples Available

We loved the look of Venetian glass so much we decided to recreate the look with our Venice fabric. Enjoy the feel and look of fine Italian leather furniture fabric faithfully recreated with in 100% heavyweight polyurethane. Perfect for chairs, trim and all around contract applications, Venice has a tri-color design with rich, subtle undertones. The overall look is similar to a tie-dye on rich Italian leather. Offered in several fascinating colors, Venice combines old-world beauty with modern-day materials to produce this striking, yet durable Italian leather furniture fabric.

- Content: SEMI-PU (Double Rub: 35000):
- Pattern Repeat: 0 (Weight: 33oz/yd) May comply with California 133 when tested with suitable components.
- 54 Wide

Recommended Color: Chocolate



ITASCA MEADOWS 1038 LINCOLN ELK GROVE VILLAGE, ILLINOIS P866.508.8899 F866.418.4159

BROWN FAUX LEATHER FABRIC AND UPHOLSTERY COLLECTION

AVAILABLE FOR FURNITURE AND TOP OF THE BED BEDDING

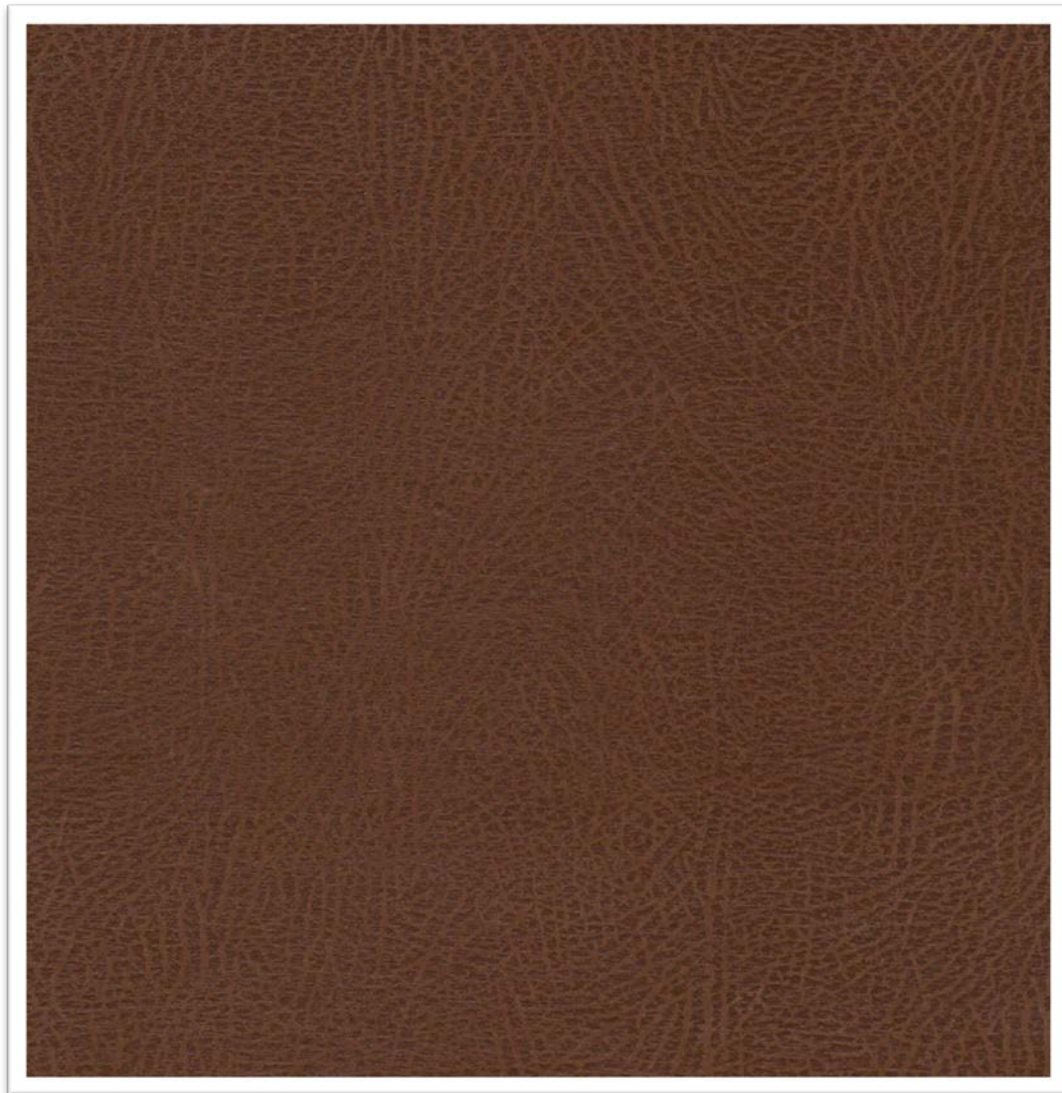
TOP GRAIN FAUX LEATHER

CAROLINA COLLECTION

Samples Available

- Content: 100% PVC.
- Pattern Repeat: H: 0" V: 0".
- 54 Wide

Recommended Color: Buckskin



BROWN FAUX LEATHER FABRIC AND UPHOLSTERY COLLECTION

AVAILABLE FOR FURNITURE AND TOP OF THE BED BEDDING

FINE GRAIN TWO TONE FAUX LEATHER

CAROLINA COLLECTION

Samples Available

Zeus

On loan from Mt. Olympus, Zeus is a leatherette upholstery with a rich, two-tone leather look and soft, pliable hand. Zeus is available in traditional colors making it perfect for upholstered club chairs, pub-style furniture, or traditional office seating with brass tacks and button tufting. This upscale leatherette upholstery has great physical properties and is versatile enough for all commercial seating applications. It also coordinates well with woven Jacquards and textures, making it easy to design upholstered club chairs that are fit for the Gods. Mere mortals will feel loftier every time they sit on them.

- Content: 100% PU (Double Rub: 100000)
- Pattern Repeat: 0 (Weight: 20.3oz/yd) May comply with California 133 when tested with suitable components.

Recommended Color: Azul



BROWN FAUX LEATHER FABRIC AND UPHOLSTERY COLLECTION

AVAILABLE FOR FURNITURE AND TOP OF THE BED BEDDING

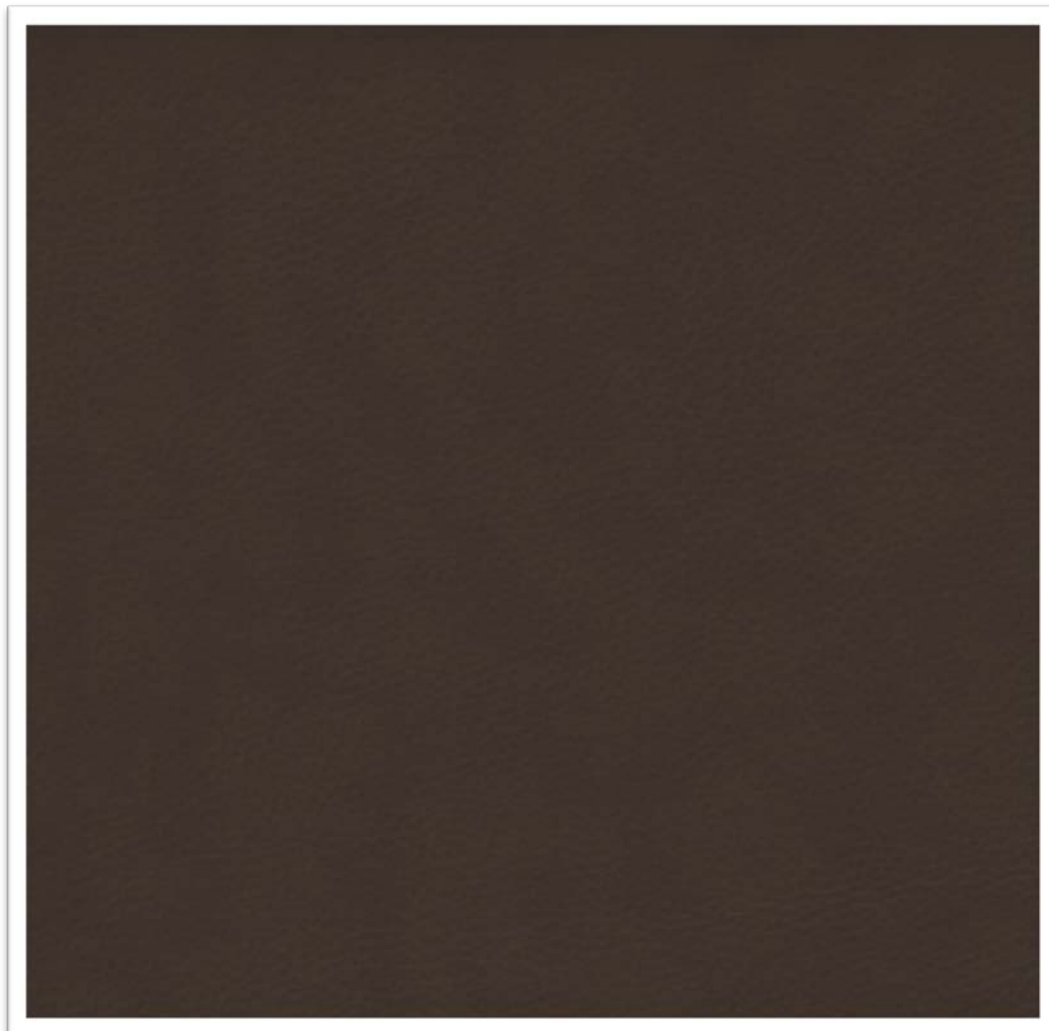
FINE GRAIN REAL LEATHER BACK FAUX LEATHER

CAROLINA COLLECTION

Samples Available

We loved the look of Venetian glass so much we decided to recreate the look with our Venice fabric. Enjoy the feel and look of fine Italian leather furniture fabric faithfully recreated with in 100% heavyweight polyurethane. Perfect for chairs, trim and all around contract applications, Venice has a tri-color design with rich, subtle undertones. The overall look is similar to a tie-dye on rich Italian leather. Offered in several fascinating colors, Venice combines old-world beauty with modern-day materials to produce this striking, yet durable Italian leather furniture fabric.

- Content: SEMI-PU (Double Rub: 35000):
- Pattern Repeat: 0 (Weight: 33oz/yd) May comply with California 133 when tested with suitable components.
- 54 Wide

Recommended Color: Chocolate

BROWN FAUX LEATHER FABRIC AND UPHOLSTERY COLLECTION

AVAILABLE FOR FURNITURE AND TOP OF THE BED BEDDING

FINE GRAIN FAUX LEATHER

CAROLINA COLLECTION

Samples Available

Buckeye

If you desire an economical alternative to Bi-cast leather, look no further. Buckeye is bi-cast faux leather for furniture designers that want to capture that same hi-end look without the high-end price. Buckeye bi-cast faux leather has the same surface appearance and pull-up effect as bi-cast but is lighter in weight. Like bi-cast, Buckeye bi-cast faux leather is designed for contemporary furniture frames that are more angled than curved.

- Content: 100% PU (Double Rub: 50000)
- Pattern Repeat: 0 (Weight: 24oz/yd) May comply with California 133 when tested with suitable components.
- 54 Wide

Recommended colors:



Saddle



Suave



Walnut

BROWN FAUX LEATHER FABRIC AND UPHOLSTERY COLLECTION

AVAILABLE FOR FURNITURE AND TOP OF THE BED BEDDING

FINE GRAIN FAUX LEATHER

CAROLINA COLLECTION

Samples Available

Buckeye II

If you desire an economical alternative to Bi-cast leather, look no further. Buckeye is bi-cast faux leather for furniture designers that want to capture that same hi-end look without the high-end price. Buckeye bi-cast faux leather has the same surface appearance and pull-up effect as bi-cast but is lighter in weight. Like bi-cast, Buckeye bi-cast faux leather is designed for contemporary furniture frames that are more angled than curved.

- Content: 100% PVC (Passes 100,000 Double Rubs, Heavy Duty).
- Pattern Repeat: H: 0" V: 0".
- 54 Wide

Recommended colors:**Chocolate**

BROWN FAUX LEATHER FABRIC AND UPHOLSTERY COLLECTION

AVAILABLE FOR FURNITURE AND TOP OF THE BED BEDDING

RICH TEXTURED FAUX LEATHER

CAROLINA COLLECTION

Samples Available

Gunsmoke

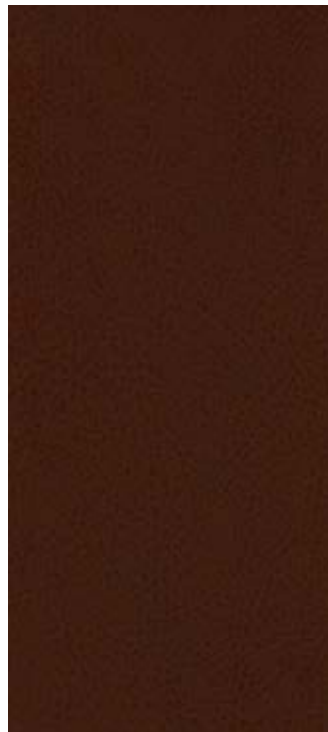
Seeking some new fabric headboard ideas? Chairs? Pillows? Gunsmoke is what you're looking for. It's made of semi-pu material with a great textured leather look and an equally attractive price. Colors range from basic earth tones to contemporary spa shades. It has a soft, pliable hand which makes it perfect for a variety of applications from pillows and pillow-back seating, side chairs and stack chairs to occasional furniture, guest rooms, lobby seating and yes, all of your fabric headboard ideas for residential and commercial seating

- Content: 100% PU (Double Rub: 100000):
- Pattern Repeat: 0 (Weight: 24oz/yd) May comply with California 133 when tested with suitable components.
- 54 Wide

Recommended colors:



Bark



Garnet



Gunsmoke



Topaz

BROWN FAUX LEATHER FABRIC AND UPHOLSTERY COLLECTION

AVAILABLE FOR FURNITURE AND TOP OF THE BED BEDDING

GLAZED ANTIQUE FAUX LEATHER

CAROLINA COLLECTION

Samples Available

London

With a pip pip cheerio, London has a traditional antique glazed leather look with an embossed texture that creates a subtle aged effect. This is perfect for seating with brass tacks, such as pub furniture, high-backed office seating and side chairs. London can also be used as a coordinate with textured woven Jacquards. This glazed leather look fabric works well on any restaurant chair or booth application because it has a special stain and abrasion resistant top finish that easily surpasses 100,00 Wyzenbeek wire screen cycles. London glazed leather look fabric is 100% PVC and comes in rich, traditional leather colors, gov'na!

- Content: 100%PVC (Double Rub: 100000):
- Pattern Repeat: 0 (Weight: 33.0oz/yd) May comply with California 133 when tested with suitable components.
- 54 Wide

Recommended colors:**Ale****Port**

BROWN FAUX LEATHER FABRIC AND UPHOLSTERY COLLECTION

AVAILABLE FOR FURNITURE AND TOP OF THE BED BEDDING

RICH GRAIN REAL LEATHER BACK FAUX LEATHER

CAROLINA COLLECTION

Samples Available

Tasos ReCast

Taos Recast upholstery has the look and feel of real leather - it's the workhorse of recycled faux leather. Taos shines when it comes to color - a huge variety ranging from homey and traditional to fun and festive. With so many colors, you'll find an endless variety of applications for Taos, in both residential and light hospitality applications. Durable and eye-catching, Taos will always look like a winner.

- Content: SEMI-PU (Double Rub: 35000)
- Pattern Repeat: 0 (Weight: 33oz/yd) May comply with California 133 when tested with suitable components.
- 54 Wide



Recommended colors:



Brown



Burgundy



Mink



Pecan

BROWN FAUX LEATHER FABRIC AND UPHOLSTERY COLLECTION

AVAILABLE FOR FURNITURE AND TOP OF THE BED BEDDING

TOP GRAIN W/REAL LEATHER BACK FAUX LEATHER

CAROLINA COLLECTION

Samples Available

Tuscany ReCast

Yet another pattern with a dual personality. Tuscany has a super color palette and a slightly textured, natural leather grain that makes it suitable not only for the home, but also for commercial upholstery applications where durability and style matter.

- Content: SEMI-PU (Double Rub: 35000)
- Pattern Repeat: 0 (Weight: 33oz/yd) May comply with California 133 when tested with suitable components.
- 54 Wide



Recommended color:



Bark

BROWN FAUX LEATHER FABRIC AND UPHOLSTERY COLLECTION

AVAILABLE FOR FURNITURE AND TOP OF THE BED BEDDING

LARGE EMBOSSED STITCHED SQUARE FAUX LEATHER

CAROLINA COLLECTION

Samples Available

London

Textured fabrics featuring a geometric design with one-inch squares that are defined by 'stitched' embossing so real you'll swear it was hand sewn. Prospect Park is available in an assortment of gorgeous, muted hues that define a space with style and symmetry. Use it once and see textured fabrics in a whole new light.

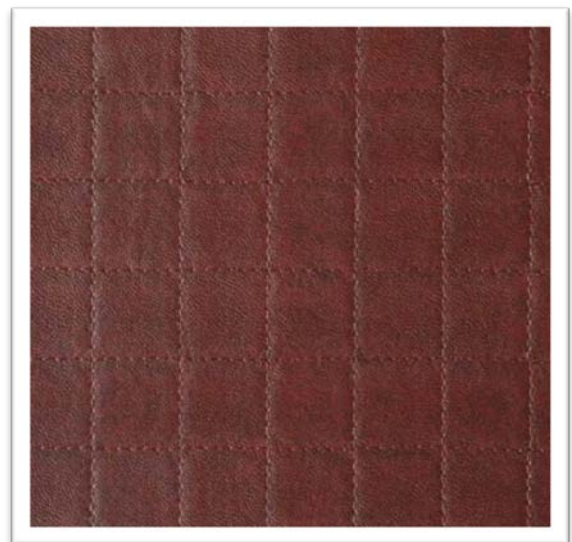
- Content: 100%PVC (Double Rub: 35000)
- Pattern Repeat: 7/8" V, 7/8" H (Weight: 28.5oz/yd) May comply with California 133 when tested with suitable components.
- 54 Wide



Recommended colors:



Chocolate



Café/Cranberry

BROWN FAUX LEATHER FABRIC AND UPHOLSTERY COLLECTION

AVAILABLE FOR FURNITURE AND TOP OF THE BED BEDDING

EMBOSSED WICKER WEAVE FAUX LEATHER

CAROLINA COLLECTION

Samples Available

Wicker Park

Woven wicker fabric has a weave that is slightly less structured-looking than a traditional basket weave pattern. With rustic colors ranging from earth tones to deep and rich shades, Wicker Park is sure to be a hit in the hospitality industry.

- Content: 100%PVC (Double Rub: 35000)
- Pattern Repeat: 0 (Weight: 28.5oz/yd) May comply with California 133 when tested with suitable components.
- 54 Wide

**Recommended colors:****Walnut**

BROWN FAUX LEATHER FABRIC AND UPHOLSTERY COLLECTION

AVAILABLE FOR FURNITURE AND TOP OF THE BED BEDDING

MINI EMBOSSED SQUARE FAUX LEATHER

CAROLINA COLLECTION

Samples Available

South Park

A woven rattan fabric with a narrow weave. It features a checkerboard style pattern while alternating a textured and smooth weave accented with highlights and lowlights. Available in rich earth-tone colors, this woven rattan fabric boasts a hi-loft knit backing gives the pattern a more luxurious hand and makes it easy to upholster.

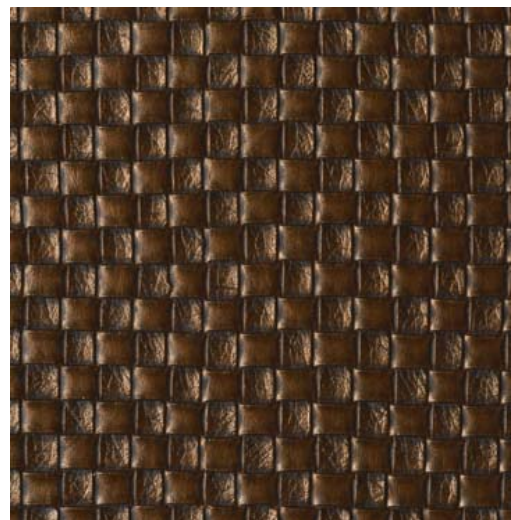
- Content: 100%PVC (Double Rub: 35000):
- Pattern Repeat: 1/4" H; 1/4" V (Weight: 28.5oz/yd) May comply with California 133 when tested with suitable components.
- 54 Wide



Recommended colors:



Chocolate



Bronze

BROWN FAUX LEATHER FABRIC AND UPHOLSTERY COLLECTION

AVAILABLE FOR FURNITURE AND TOP OF THE BED BEDDING

EMBOSSED WICKER WEAVE FAUX LEATHER

OFS COLLECTION

Samples Available

Wicker Park

- Material: 100% Vinyl
- Width: 54"
- Weight: 36 Ounces per Linear Yard
- Thickness: 1.1 mm
- Backing: Poly/Cotton Woven
- Suggested Uses: Automotive, Contract, Education, Hospitality, Residential, RV

Performance Specifications:

- Abrasion Resistance: 100,000+ Double Rubs per ASTM D 4157-92 / CFFA-1A
- Ultra Violet Resistance: 200 Hours ASTM G26-96 Method C / CFFA-2
- Cold Crack: -10 degrees F Federal Standard No. 191A-Method 5874 / CFFA-6

Flammability Requirements:

- California Fire Code Technical Bulletin No. 117; UFAC Class I; BIFMA CS-191-53 Section 3; BIFMA Upholstery Section 4; MVSS 302; NFPA 260; IMO A.652(16)8.2 & 8.3; ASTM E84: Class I or A Rating
- Cleaning Instructions:
- Prompt cleaning is always recommended. Ordinary dirt and stains can be removed with mild soap and water. Rinse the cleaned area with clean water and dry with a lint-free cloth

Recommended color: Brown Vinyl



Cranium Furniture

ITASCA MEADOWS 1038 LINCOLN ELK GROVE VILLAGE, ILLINOIS P866.508.8899 F866.418.4159

BROWN FAUX LEATHER FABRIC AND UPHOLSTERY COLLECTION

AVAILABLE FOR FURNITURE AND TOP OF THE BED BEDDING

SAMPLES AND FABRIC COLORS

Since all computing devices show colors differently, we recommend that all of our customers request samples before ordering or purchasing anything to ensure you are satisfied with the color, feel and suitability of the fabric for your application.

We offer a fabric sample program designed to help you select the correct fabric for your application every time. By offering fabric samples our customers know exactly what they are getting before they place an order, or spend any money. This helps keep our customers satisfied with their non-returnable, non-exchangeable, nonrefundable by avoiding disappointments as a result of placing an order without first seeing and touching the fabric. There is a small fee + S/H/P per swatch sample due to our incurred cost from our fabric vendors. Fee is determined by the fabric house and fabric type, etc. Our interest is your ultimate satisfaction.